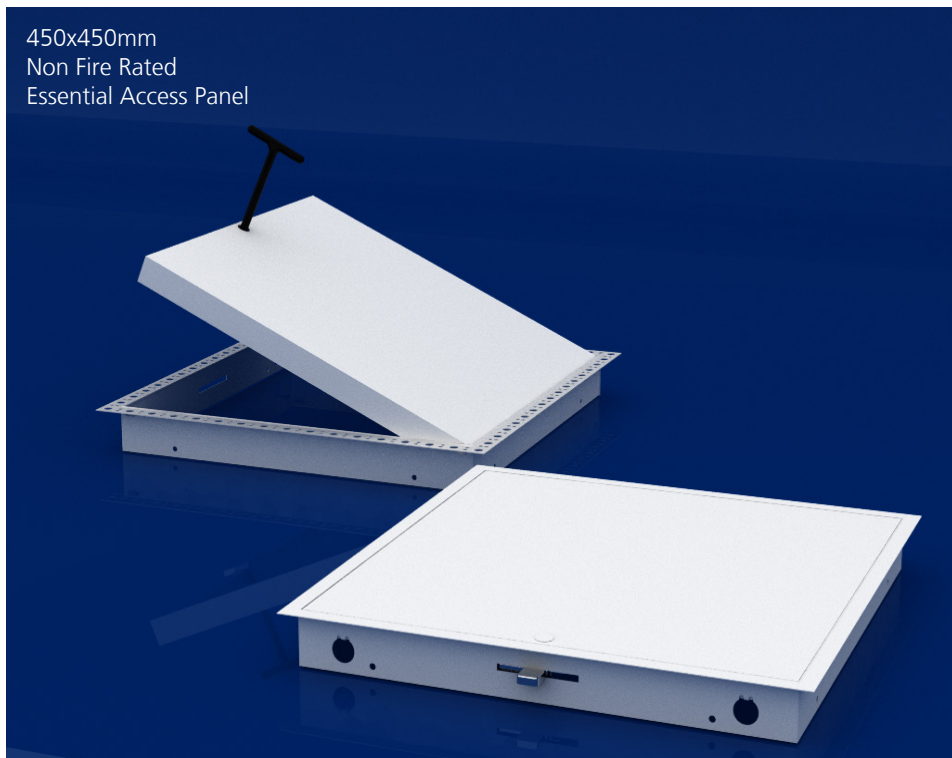
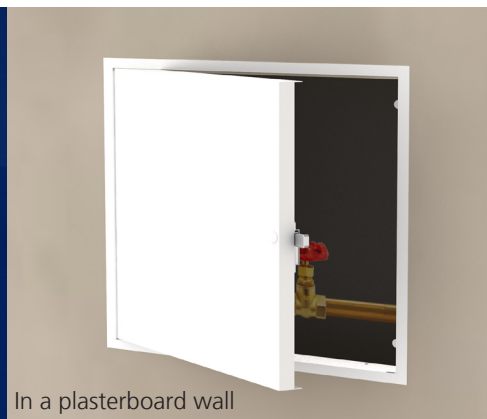


ESSENTIAL NON FIRE RATED METAL FACED PICTURE FRAME CTMP/ESS



450x450mm
Non Fire Rated
Essential Access Panel



In a plasterboard wall



with T-Key
for Budget Lock

Ceildoor's Essential range of access panels - are cost-effective, with no compromise on quality.

Its minimal design made of fully polyester powder coated zintec make it durable and resistant to weathering and moisture. Its deep frame makes it easier to fit and also helps it maintain a solid profile.



Essential Design
Simple, durable,
effective design



Maximum Protection
Full Polyester Powder
Coating



Built To Last
With a 50mm zintec
steel frame



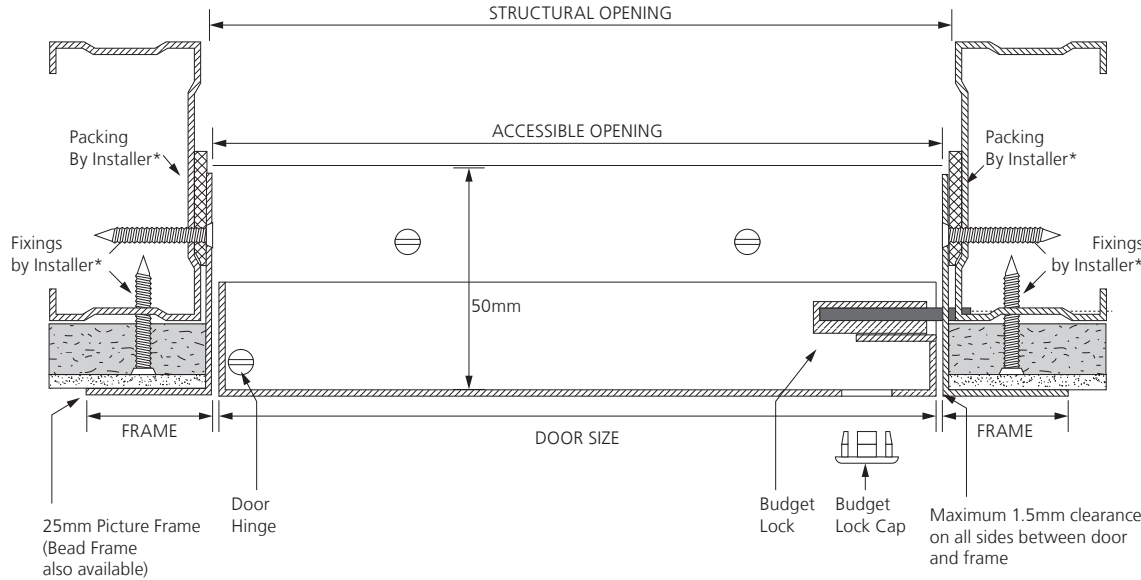
Maximum Accessibility
Full accessible door
opening

Composition

- Frame** ▶ 1mm zintec welded construction
- Door** ▶ 1mm zintec folded all sides for rigid door shell
- Coating** ▶ Fully Polyester Powder Coated RAL9010 Matt White
- Locks** ▶ Budget Lock

Installer must follow guidelines set by the wall or ceiling manufacturer to ensure the correct properties are achieved for the environment. All tests have been conducted by independent UKAS accredited testing centres, further details available upon request.

ESSENTIAL NON FIRE RATED METAL FACED PICTURE FRAME CTMP/ESS



Essential Access Panel in a Wall Environment

Fitting Guidelines

To calculate a sufficient opening for the frame, we recommend adding 10mm to the door size supplied. Alternatively when ordering an access panel to suit an opening, take away 10mm from your opening dimension to calculate a door size.

Frame should be screw fixed into the wall or ceiling opening using fixing holes located on the sides of the frame.

It is recommended that sufficient independent bracing and support is obtained to ensure safe opening and closing of the access hatch within its environment.

LEGEND: Plaster skim Plasterboard

PLEASE NOTE: Drawing not to scale, reference purposes only. Components shown with an asterisk (*) are suggestions only. Always refer to guidance provided by your ceiling or wall manufacturer.

Standard Shape and Sizes

Below is our range of sizes we manufacture as standard.

Door Size (mm)	Door Type	Structural Opening (mm)	Accessible Opening (mm)
300 x 300	Single	310 x 310	300 x 300
450 x 450	Single	460 x 460	450 x 450
600 x 600	Single	610 x 610	600 x 600

Extra Protection Against Moisture and Corrosion

All Ceildoor metal access panels and hatches are fully powder-coated white RAL 9010 in matt polyester paint. Even though the majority of access panels in the industry are used internally, Ceildoor ensures all our products are coated in full polyester powder which is normally recommended for general exterior situations, where good weathering resistance is required against high levels of atmospheric moisture or in particularly aggressive atmospheres.

Security and Safety

It is extremely important to close and lock the access panel or hatch immediately after use. Failure to do so will affect and impair the performance of the environment where it has been installed in the event of fire.