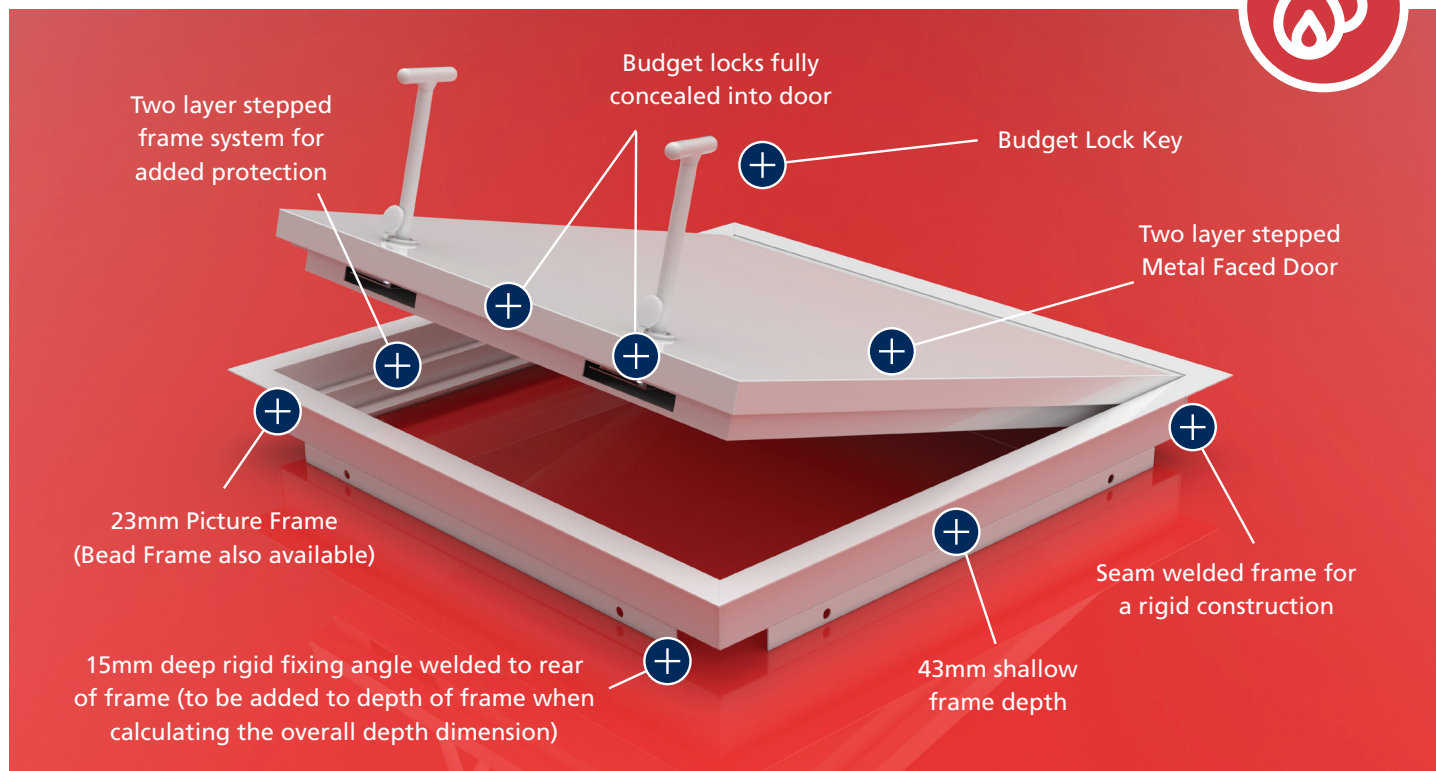


2HR FIRE RATED METAL FACED PICTURE FRAME CTMP/FR2



Ceildoor's 2 hour fire rated Access Panels have been designed and tested to comply with fire resistance in accordance to BS 476 Part 22 for up to 120 minutes.

You can also ensure your building complies with Part J building regulations which require inspection hatches for concealed heat producing appliances for maintenance by using Ceildoor's fire rated Access Panels.



2 Hour Fire Rated
 Up to 120 mins
 integrity performance



Unique Design
 Compact and self
 contained



Maximum Protection
 Fully Polyester Powder
 Coated



Part J
 Complies with Part J
 building regulations

Composition

- Frame** ▶ 1.2mm zintec welded construction
- Door** ▶ 1mm zintec folded all sides for rigid door shell
- Coating** ▶ Fully Polyester Powder Coated
RAL9010 Matt White
Other colours available
- Lock** ▶ Budget Lock
- Depth** ▶ Frame Depth: 43mm (Plus 15mm Fixing angles)
Door Depth: 39mm

Building Regulations

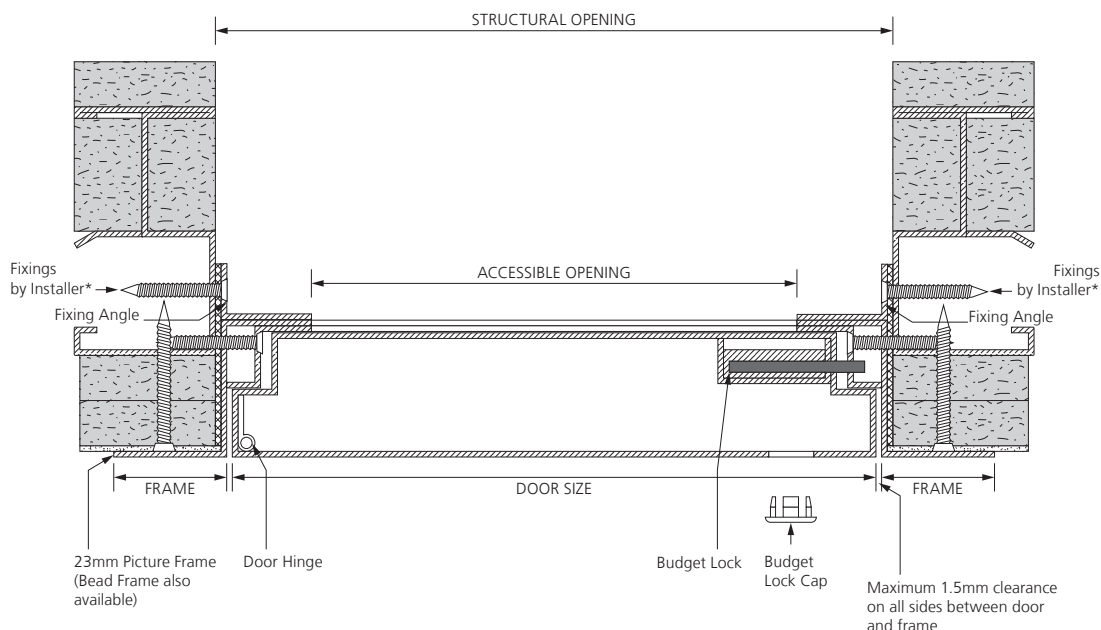
- Part L** ▶ **Thermal Resistance**
BS EN ISO 10077-1:2006
by Exova Warringtonapt
- Part J** ▶ **Fire Resistance**
BS 476: Part 22: 1987
by Exova Warringtonfire

Installer must follow guidelines set by the wall manufacturer to ensure the correct properties are achieved for the environment. All tests have been conducted by independent UKAS accredited testing centres, further details available upon request.

DISCLAIMER All suggestions on the use of our products within this document are made in good faith and without guarantee since the conditions of use are beyond the control of Ceildoor Products Limited. It is the installer's responsibility that: our products are installed according to the wall manufacturer's recommendations related to access hatches; and are fit for its intended purpose before it is installed. We do not accept any liability for any loss, damage or claims arising from faulty or defective installation or the improper use of our goods. Ceildoor Products Limited pursue a policy of continuous product development and reserves the right to amend specifications without prior notice, please quote the issue number of this document to ensure the correct model of Access Panel is being specified.

2HR FIRE RATED METAL FACED PICTURE FRAME - CTMP/FR2

Wall Environment



Fitting Guidelines

To calculate a sufficient opening for the frame, we recommend adding 10mm to the door size supplied. Alternatively when ordering an Access Panel to suit an opening, take away 10mm from your opening dimension to calculate a door size.



Frame should be screw fixed into the wall using fixing holes located on the sides of the frame.

It is recommended that sufficient independent bracing and support is obtained to ensure safe opening and closing of the access hatch within its environment.

Please Note:

Drawing not to scale, reference purposes only. Components shown with an asterisk (*) are suggestions only. Always refer to guidance provided by your wall manufacturer.

Legend

-  Plaster skim
-  Plasterboard

Standard Shape and Sizes

Below is our range of sizes we manufacture as standard. Or use our bespoke manufacturing service for any other size or shape. Simply contact us with further details of your specification.

Door Size (mm)	Door Type	Structural Opening (mm)	Accessible Opening (mm)
300 x 300	Single	310 x 310	245 x 245
450 x 450	Single	460 x 460	395 x 395
600 x 600	Single	610 x 610	545 x 545
600 x 300	Single	610 x 310	545 x 245
900 x 600	Single	910 x 610	845 x 545
1000 x 1000	Single	1010 x 1010	945 x 945

Extra Protection Against Moisture and Corrosion

All Ceildoor metal Access Panels and hatches are fully powder-coated white RAL 9010 in matt polyester paint. Even though the majority of Access Panels in the industry are used internally, Ceildoor ensures all our products are coated in full polyester powder which is normally recommended for general exterior situations, where good weathering resistance is required against high levels of atmospheric moisture or in particularly aggressive atmospheres.

Security and Safety

It is extremely important to close and lock the Access Panel or hatch immediately after use. Failure to do so will affect and impair the performance of the environment where it has been installed in the event of fire.

Fire Performance

This product has been designed to comply with fire resistance in accordance to BS 476 Part 22. The fire reports to substantiate this are available upon request. The sectional details above are guidelines on how the product should be installed into the fire rated application. It will match the assessed or tested construction. All of the structural components in this product and recommended methods of fixing are non-combustible.

Criteria

It is assumed that the access hatch will be installed within a supporting wall construction that has been previously tested and has shown it to be capable of satisfying the integrity performance criteria of BS 476: Part-22:1987, clause for a period of 120 minutes. For further information contact our technical department. We recommend this product is installed by a member of a recognised third party certification scheme for the installation of fire protection products and systems, such as FIRAS.